

B. Sc. in H&H.A. Kitchen Uniform



CHEF CAP - Disposable Round Top head cap,
 Material: Paper / Lightweight,
 Colour: white
 IHM logo to be printed on cap.



SCARF - 01 Number, Black scarf,
 Cloth Type: Cool Cotton
 FULTOS GOLD HI GOLD SHADE NO. 25



CHEF COAT - 01 Number,
 Cloth Type: Trovine White, Chef coat with black cuffs and collar
 with black buttons, full sleeves, pocket strip black color 2cm
 wide. SHADE NO - Raymond's 2824-24
 Name of the students need to be embroidered with bold capital
 letters.
 IHM logo on side arm pocket.



TROUSER - 01 NUMBER,
 Cloth Type: Terrycot, Siyaram SHADE NO. - 012019-20
 Color: white and black checkered
 0.1 cm square checks, zip fly, belt loops, waist button with
 hooks and bar on waist band, 2 pleats in front, No. of pockets: 2
 front + 1 back
 Balloon bottom/ Wide Bottom



HALF APRON - 01 Number,
 Cloth Type: Cool Cotton, Bombay Dyeing
 Full Black half apron, above ankle length with knot cover and
 long lace to be tied in front.



SHOES AND SOCKS - BATA/LIBERTY Oxford black shoes
 good quality for long standing hours and black full length
 cotton socks.

*Students opting for
 Vegetarian stream need to
 get the name embroidered in
 Green color ■ and rest in
 Red color ■ *

Diploma in Food Production Kitchen Uniform



CHEF CAP - Disposable Round Top head cap,
 Material: Paper / Lightweight,
 Colour: white
 IHM logo to be printed on cap.



SCARF - 01 Number, White scarf,
 Cloth Type: Cool Cotton
 FULTOS GOLD HI GOLD SHADE WHITE



CHEF COAT - 01 Number,
 Cloth Type: Trovine White, Chef coat with white buttons, full sleeves, SHADE NO. - Raymond's 2824-24
 Name of the students need to be embroidered with black colour in bold capital letters.
 IHM logo on side arm pocket.



TROUSER - 01 Number,
 Cloth Type: Terrycot, Siyaram SHADE NO. - 012019-20
 Color: white and black checkered
 0.1 cm square checks, zip fly, belt loops, waist button with hooks and bar on waist band, 2 pleats in front, No. of pockets: 2 front + 1 back
 Balloon bottom/ Wide Bottom



HALF APRON - 01 Number,
 Cloth Type: Cool Cotton, Bombay Dyeing
 Full White Apron, above ankle length with knot cover and long lace to be tied in front.



SHOES AND SOCKS - BATA/LIBERTY Oxford black shoes
 good quality for long standing hours and black full length cotton socks.

*Students opting for Vegetarian stream need to get the name embroidered in Green color ■ and rest in Red color ■ *

Diploma in Bakery & Confectionery Kitchen Uniform



CHEF CAP - Disposable Round Top head cap,
 Material: Paper / Lightweight,
 Colour: white
 IHM logo to be printed on cap.



SCARF - 01 Number, Royal Blue scarf
 Cloth Type: Cool Cotton



CHEF COAT - 01 Number,
 White Raymond trovine quality code 2824-24. Full sleeves with turnback royal blue cuffs reversible button down front, black plastic buttons with. Collar with royal blue colour. Only one sleeve pocket. Pocket strip royal blue colour-2cm wide. Name of the students need to be embroidered with royal blue colour above the pocket. Ihm logo on side arm pocket.



TROUSER - 01 Number,
 Cloth Type: Terrycot, Siyaram
 Color: Black and with zip fly, belt loops, waist button with hook and bar on waistband. 2 pleats in front



HALF APRON - 01 Number,
 Cloth Type: Cool Cotton, Bombay Dyeing
 Full White Apron, above ankle length with knot cover and long lace to be tied in front.



SHOES AND SOCKS - BATA/LIBERTY Oxford black shoes
 good quality for long standing hours and black full length cotton socks.

Diploma in F&B Service Uniform

SHIRT- Full sleeves shirt for Gents & Ladies

Colour: white

TROUSER - Black Trousers for Gents & Ladies

WAISTCOAT - Black Waistcoat for Gents & Ladies with Golden buttons

BOWTIE - Black Bowtie for Gents & Ladies

BLAZER (Optional) - Black Blazer for Gents & Ladies for Winters.

SHOES - 1. Black Leather Oxford Shoes for Gents.
2. Black Leather Bellies with 1cm heel for Ladies



B. Sc. in H&H.A. F&B Service Uniform



SHIRT- Full sleeves shirt for Gents & Ladies
Colour: white



TIE- Navy Blue Tie for Gents & Ladies with IHM Logo.



TROUSER - Black Trousers for Gents, 16" bottom.



BELT - Plain black, formal not more than 1.5" broad. Simple buckle



WAISTCOAT - Black Waistcoat for Gents & Ladies



SHOES - 1 Pair Black Leather with laces Rubber Sole Similar to Bata Oxford for Gents



NAME TAG - 01 Number Material : Plastic with safety pin, white background with black fonts



SHOES - Black bellies, well-polished. Minimum 1" and maximum 1 ½" heel permitted for Ladies



APRON -Plain Black apron, 3 inches above ankle for Gents & Ladies.

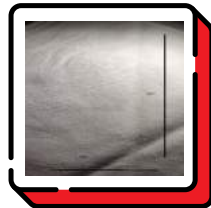


SOCKS - Cotton Plain Black (No pattern) – Full Length, (Ankle Length or shorter Length not allowed) for Gents & Ladies

Diploma & B. Sc. in H&H.A. F&B Service Kit



WAITER'S CLOTH - 2 Number, Size: 18" *24"
(Gaberdine), Plain White



SERVIETTES - 4 Number, Size: 20" *20"
(Damask), Plain White



DUSTERS - 2 Number, Size: 12*12 (Checked
Pattern)



NOTEPAD - 1 Number, A7 pocket size; 7.4 cm
x 10.5 cm, wire binding that is nylon-coated



BOTTLE OPENER - Often Referred as Waiters
Friend and Bottle opener cum Wine Bottle
Corkscrew remover



TIKTOK PEN - 1 Number, Spring Pen without
Cap



POCKET LIGHTER - 1 Number, Small pocket
Lighter

B. Sc. in H&H.A. Front Office Uniform



SHIRT- 02 Number, Full sleeves shirt for Gents & Ladies
 Colour: white



TIE- Navy Blue Tie with IHM Logo for Gents & Ladies



TROUSER -01 Number, Black structured poly viscose trouser for Gents



BELT - Plain black, formal not more than 1.5" broad. Simple buckle



BLAZER - 01 Number, Black structured poly viscose Blazer for Gents & Ladies



SHOES - 1 Pair Black Leather with laces Rubber Sole Similar to Bata Oxford for Gents



NAME TAG - 01 Number
 Material : Plastic with safety pin, white background with black fonts



SHOES - Black bellies, well-polished. Minimum 1" and maximum 1 ½" heel permitted for Ladies

Uniform Saree for Ladies will be decided by Institute later



SOCKS - Cotton Plain Black (No pattern) – Full Length, (Ankle Length or shorter Length not allowed) for Gents & Ladies

B. Sc. in H&H.A. Housekeeping Uniform



SHIRT- 02 Number, Full sleeves shirt for Gents & Ladies

Colour: white



TROUSER -01 Number, Terry cot, 2 pleats in the front, 2 pockets in front, 1 pocket in back



WHITE SCRUB CAP- Polyviscose material, tied back for Gents & Ladies



FULL APRON - 01 Number, Cool Cotton, Pocket in the centre and tied on the backside of the waist for Gents & Ladies



SHOES - 1 Pair Black Leather with laces Rubber Sole Similar to Bata Oxford for Gents & Ladies



NAME TAG - 01 Number
 Material : Plastic with safety pin, white background with black fonts



SOCKS - Cotton Plain Black (No pattern) – Full Length, (Ankle Length or shorter Length not allowed) for Gents & Ladies